



RISK OF FIRE AND ELECTRICAL SHOCK. FIXTURE MUST BE INSTALLED BY A QUALIFIED ELECTRICIAN ONLY IN ACCORDANCE WITH NATIONAL, LOCAL BUILDING AND ELECTRICAL CODES. DISCONNECT POWER AT ELECTRICAL PANEL BEFORE SERVICING.

## IMPORTANT SAFETY INSTRUCTIONS.

1. Read all instructions completely before beginning. Keep these instructions in safe place for future reference.
2. To reduce risk of fire and over-heating, make sure all connections are tight.
3. Turn off the electrical power before proceeding.



### CAUTION: RISK OF FIRE OR ELECTRIC SHOCK

LED Recessed Kit installation requires knowledge of luminaire electrical systems. If not qualified, do not attempt installation. Contact a qualified person.

**WARNING - Risk of fire or electric shock.** LED Recessed Kit installation requires knowledge of luminaire electrical systems. If not qualified, do not attempt installation. Contact a qualified electrician.

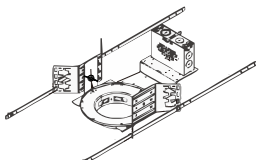
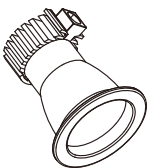
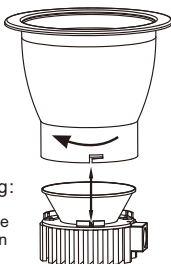
**WARNING – Risk of fire or electric shock.** Install these kits only in the luminaire that has the construction features and dimensions shown in the photographs and/or drawings and where the input rating of the recessed kit does not exceed the input rating of the luminaire.

**WARNING –** To prevent wiring damage or abrasion, do not expose wiring to edges of sheet metal or other sharp objects.

Do not make or alter any open holes in an enclosure of wiring or electrical components during kit installation.

THIS RECESSED KIT IS ACCEPTED AS A COMPONENT OF A LUMINAIRE WHERE THE SUITABILITY OF THE COMBINATION SHALL BE DETERMINED BY AUTHORITIES HAVING JURISDICTION.

Please examine all parts that are not intended to be replaced by the retrofit kit for damage and replace any damaged parts prior to installation of the retrofit kit.

<b>A. For New Construction Applications:</b>	<b>B. TYPE Recessed Kit Contents:</b>	<b>C. TYPE Recessed Kit Contents:</b>
<p>1.LED Downlight housing frame kit.(Order Separated)</p> 	<p>1.LED Downlight                  2.LED Driver Box                  3.User manual                  4.Clips 4pcs                  5.Lable</p> 	<p>1.LED Engine (Without housing)                  2.LED Driver Box                  3.User manual                  4.Clips 4pcs                  5.Housing                  6.Lable</p> <p><b>Remark:</b> When LED engine and trim is separate, please assembly as following:</p> <p>Slide the trim in clockwise direction when they are in position.</p> 



**RISK OF FIRE AND ELECTRICAL SHOCK. FIXTURE MUST BE INSTALLED BY A QUALIFIED ELECTRICIAN ONLY IN ACCORDANCE WITH NATIONAL, LOCAL BUILDING AND ELECTRICAL CODES. DISCONNECT POWER AT ELECTRICAL PANEL BEFORE SERVICING.**

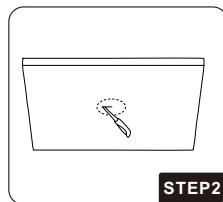
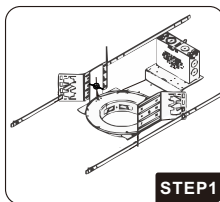
## INSTALLATION

NOTE: RECESSED KIT IS VOLTAGE SPECIFIC. VERIFY PROPER VOLTAGE BEFORE INSTALLATION.

**FOR NEW CONSTRUCTION APPLICATIONS, BEGIN ON STEP 1.**

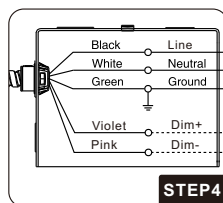
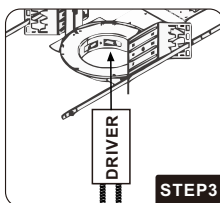
**FOR REMODEL APPLICATIONS, BEGIN ON STEP 3.**

**STEP 1:** Install the housing frame kit in the ceiling. Adjust horizontal position by sliding housing along bar hangers.



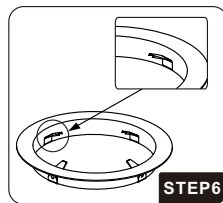
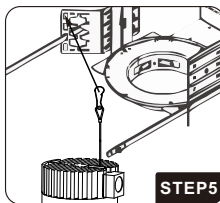
**STEP 2:** Open a hole according to the mounting frame diameters as following:  
 4inch fits 4" min. to 4.7" max.  
 6inch fits 6" min. to 6.7" max.  
 8inch fits 7.7" min. to 8.4" max.  
 10inch fits 10" min. to 10.7" max.

**STEP 3:** Install the Driver Box into the junction box. Then open J-box. (For remodel application, remove J-box supply wires and existing driver / ballast)



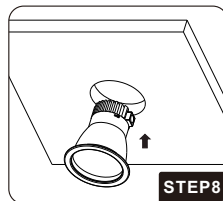
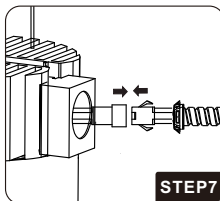
**STEP 4:** Wiring.

**STEP 5:** Close the J-box. Then secure the driver box in the ceiling by screws. Install the safety hook to the bracket hole.



**STEP 6:** 4 clips are needed to be installed if the existing mounting frame don't have it.

**STEP 7:** Plug the black connector of LED engine to the black connector on the end of the flex conduit on the driver box. Then insert it to hole of LED engine.



**STEP 8:** Install the led downlight into the ceiling. Restore power after installation is completed.

### REMARK:

Ensure the mounting frame can hold the weight of LED downlight. After modification completed, attach the Lamping replacement marking label and cautionary label which provided with the retrofit kit package to the light fixture. The labels shall be visible during relamping, and after installation.