

LED TROFFER/PANEL WITH EMERGENCY INSTALLATION INSTRUCTIONS

OPTIONAL

2'x2', 2'x4', 1'x4'

NOTE

Please read this entire manual to fully understand and safely use this product.

Specifications are subject to change without notice.

Please visit our website the most recent user guide versions.

UNPACKING

- 1 Unpack and carefully examine the product.
- 2 Report any damage and save all packing materials if any part(s) were damaged during shipping.
- 3 Do not attempt to use this apparatus if it is damaged.

IMPORTANT SAFETY INFORMATION



CAUTION: Risk of Electric Shock

Suitable for Damp location. Access above ceiling required. Suitable for suspended ceilings.

READ ALL INSTRUCTIONS BEFORE INSTALLATION

- 1 Consult a qualified electrician to ensure correct branch circuit conductor.
- 2 The product should be installed and operated by a qualified electrician or technician in accordance with relevant local codes.
- 3 Risk of electric shock. Ensure that main power source is off when wiring or soldering the sections of the product.
- 4 Before installing this fixture or doing any maintenance, make sure to turn off the power supply at the circuit breaker or fuse box.
- 5 Check to make sure that all fixture connections have been properly made and the fixture is grounded to avoid potential electrical shocks.
- 6 Designed for use in AC 110-277V/110-347V, 50/60Hz, protected circuit.

INCLUDED IN THIS BOX

- 1 LED Luminaire
- 2 Installation instruction

INDICATOR STATUS

LED Indicators Status	EM Driver Status/Mode
• Solid Red ON	System OK/AC OK
• None (LED OFF)	Normal working on EM mode
• Flashing Red, 1s on/1s off (cycle)	Battery voltage is too low
• Flashing Red, 0.3s on/0.3s off (cycle)	System NG; Battery not detected, check battery connection;

LED TROFFER/PANEL WITH EMERGENCY INSTALLATION INSTRUCTIONS

INSTALLATION INSTRUCTIONS

Step 1

Bend J-Hook by 45° making it vertical to the rear cover of LED luminaire (Figure 1A). Bend the top part of J-Hook by 90° (Figure 1B). Repeat STEP1 to other J-Hooks.

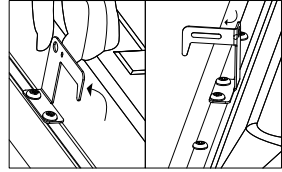


Figure 1 A

Figure 1 B

Step 2

Turn off power, remove the ceiling panel, then place LED luminaire into the T-bar, ensure the LED luminaire is attached to the ceiling. (Figure 2) (J-Hook for positioning only)

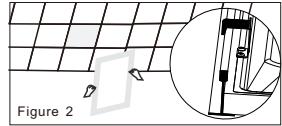


Figure 2

Step 3

Open the driver box. (Figure 3)
(trade size of conduit: 22.2mm dia)

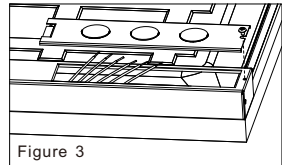


Figure 3

Step 4

1 Connect AC Wires

Input L connects to the black wire of the luminaire, N connects to the white wire, the ground connects to the green wire.

2 Connect Dimmer

Compatible with 0-10V dimmer
The driver VIOLET (D+) to the dimmer +, and the driver PINK(D-) to the dimmer-

Connect the wires with terminal cap as shown in wiring diagram.(Figure 4)

Incoming insulated dimming conductors shall have voltage rated at least equal to the branch voltage.

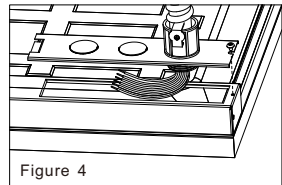


Figure 4

Step 5

Close the driver box and screw in (Figure 5)

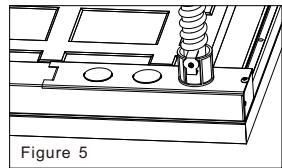


Figure 5

WIRING DIAGRAM

Connect the indicator if there are two wires in the junction box. (Connect the indicator to the LED luminaire if without these two wires)

